

Solutions for  
**Cleaning & Hygiene**



**seko**

# Content

**Introduction** page 04

**Kitchen Hygiene** page 06

- Peristaltic Pumps
- Double & Triple systems
- Timed Dosing

**Laundry** page 14

- Dynamik LR, OPL Basic, Smart Systems
- Wash Series

**Surface Cleaning** page 20

- Dilution Control
- Cleaning and Disinfection
- Foaming Systems
- Spray Systems
- Refill Range

**Additional Information** page 30



# A Worldwide Group at your service

## Globally Present, Locally Active

Our Global presence ensures that we can support our Customers wherever they are. Supported by teams in over 20 countries, as well as by our accredited Partner Distributor network, we ensure professional, local customer support in over 120 countries, with the added benefit of rapid delivery of goods to meet your needs.

All this backed up and supported by a world-class team of Technical Customer Service, able to provide all the back up or technical support needed. With ISO certificated production sites in Europe, the Americas and Asia, we are close to our customers and fully compliant with all local norms both in terms of our product designs as much as our production facilities.



# How SEKO works for You

From the spark of an idea, through to the delivery of a solution, SEKO is with you all the way!

SEKO supports its customers in every phase of a project, from the inception of an idea or request, through design and testing to launch and installation. Our in-house research, design and development teams work closely with the local teams, drawing on customer and market inputs. Then using state-of-the-art technologies to optimize costs and using our own specifically designed test benches to ensure rigorous, robust testing, we ensure a quality solution is delivered quickly to market.

No matter which processes and applications are planned SEKO has a solution in the cleaning and hygiene of kitchens and laundries and surfaces of all types in applications like **Offices and Restaurants, Hospitals and Hotels, Retailers and Schools, Car Washes and Swimming Pools, Cooling Towers, Energy, Food & Beverage, Water & Gas Utilities Potable and Waste Water Treatment.**

## 1 Partnership Philosophy

Being a privately-owned business means that we are here for the long term and can plan projects with and for our Customers, where both parties benefit. It means we can rapidly take decisions to invest our resources to ensure our optimum solutions are delivered.

## 2 Your Business, Our Solutions

Our extensive product range represents a unique combination of design, development and implementation know how. With a wide and ever evolving range of products and ancillaries, we can offer specific and comprehensive solutions for a variety of industrial applications. Our solutions are conceived to fit seamlessly into your operation, optimizing the processes and applications

## 3 Uniquely Positioned

SEKO's 3 business units, Cleaning & Hygiene, Water & Industry and Industrial Processes puts us in a unique position to be able to respond to the widest range of business needs, with a broad range that allows you the Customer to deal with just one company, simple.

# Cleaning and Hygiene

## An ever-evolving set of solutions for your environment

SEKO has always supported businesses facing the commercial challenges that arise from having to ensure the cleanest most hygienic premises, whilst driving costs down and minimizing environmental impact. Today, it has built a worldwide reputation as a leader in the world of Cleaning and Hygiene Dosing and Dilution Solutions. Exploiting our market experience, we design, develop, test and manufacture designs that ensure all our solutions and systems deliver:

### Precision and Consistency

Maximizing cost control for chemical dosing, or ensuring the right dilution rate is used, requires advanced technology, impervious to fluctuations in water pressure, to guarantee an effective result, in turn providing the security for a given business brand.

### Ease of Use and Installation

As a global company, we are attuned to the differing needs of individual markets. This is why, when we design a new product, we ensure that installation is simple, that we use uniform programming language solutions that are intuitive and easy to understand, in whatever language you speak.

### Safety and Reliability

The safety of customers and operators is paramount, requiring the very best in terms of design and features. SEKO's range provides this security. From the locking mechanisms of our SekureDose range through to the IP65 and Nexa 4 enclosures of our warewash systems, safety is at the forefront of our design ethos. Reliability drives good safety, and all SEKO's products are fully tested prior to leaving our warehouse.

### Operational Efficiency

Running a business is about making money. To do this, SEKO plays its part. From the affordability of the range of solutions, through to thoughtful design elements like the semi flat pack design of Sekure cabinets to the Transaxle Technology, that improves the lifetime of motors and tubes alike all aimed at reducing operating costs.







# Kitchen Hygiene

## SEKO's Solutions designed with the Kitchen in Mind

Working alongside Global machine and chemical manufacturers and catering operators SEKO has developed a high-quality range of pumps, designed to keep equipment performing brilliantly. From peristaltic pump systems, designed to deliver precise quantities of chemical, to robust and highly efficient dosing systems for enzyme drain cleaning solutions, we can help keep a catering operation running cleanly and smoothly.

### Glasswashers

- Peristaltic dosing pumps

### Hood type dishwashers

- Peristaltic dosing pumps
- Double/Triple Dosing systems

### Conveyor dishwashers

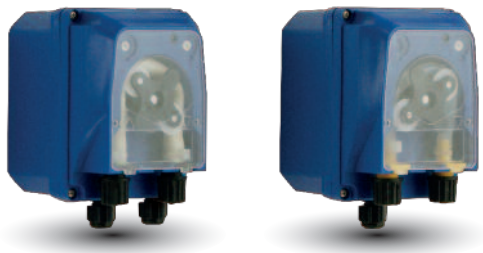
- Peristaltic dosing pumps
- Double/Triple Dosing systems

### Timed Control

- Digital or Analogue programmer

# Peristaltic Pumps

- Wide spread of flow rates for all types of warewash machines
- Quick and easy installation to save your time
- Low maintenance and robust design
- Wide variety of tubes to adapt to all chemicals
- Wide spread of functions offer maximum flexibility



## Peristaltic dosing pumps

SEKO's peristaltic range offer reliable robust and affordable dosing solutions for glasswash machines, hood type and conveyor warewash machines amongst others.

Offering **simple installation** and connection, thanks to a wall mounting bracket and circuit board mounted plugs. **Safety and reliability** is assured thanks to polypropylene enclosures, meeting **IP 65 classification**.

**Ease of use** and low operating costs are guaranteed, thanks to easy to use trimmer settings, allowing fast and simple configuration and **minimum maintenance** schedules.

### PA Model

- Fixed speed peristaltic pump with analogue adjustment of conductivity setpoint
- Equipped with a conductivity probe to enable the dosing
- Doses detergent liquids using a Santoprene squeeze tube
- Flow rate 6 – 9 l/h

### PR Model

- Versatile peristaltic pump with analogue dosing speed adjustment
- For use with a detergent, with Santoprene tubing
- For use with rinse aid, using SekoBril tubing, offers high chemical compatibility
- Analogue speed adjustment mechanism
- Flow rate 4 – 7 – 18 l/h for Detergent, 1 l/h for Rinse Aid

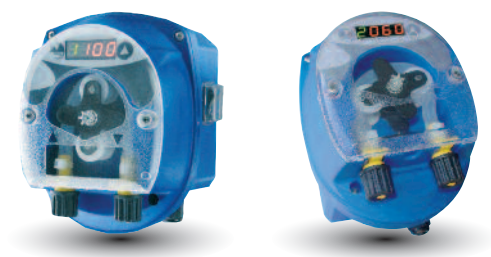
### PRT Model

- Fixed speed peristaltic pump with an analogue dosing time adjustment
- Powered via single or double solenoid valves
- 2 setting trimmers enable detergent initial charge (18-180 secs) and re-charge (2-15 secs)
- Flow rate 6 – 9 l/h

### PM Model

- Fixed speed peristaltic pump with analogue adjustment of dosing time
- Both feature trimmer enabled dosing time.
- Available as a low flow variant
- Flow rate 0.4 – 1.5 l/h

## Peristaltic Pumps



### Dynamik Series

SEKO's digital multifunction peristaltic range features **microprocessor technology** across all its products, providing precise and reliable programming of speed, time and conductivity values.

Its **luminous, 4-digit display** makes it easy to read and interpret information, aided by the use of green and red colours to differentiate between programming and parameter control.

SEKO's outstanding **Transaxle Technology** provides support and stability to the drive shaft, making the roller pressure on the squeeze tubes more uniform extending both motor and tube life.

Analogue versions are also available.

### DR Peristaltic pump

---

- Designed for all single-tank and tunnel warewash machines with one or two solenoid valves for dosing detergent
- Volumetric or timed dosing modes, where the pump starts dosing at set speeds or when a signal is detected, and stops when the set dosing time has finished
- Flow rate 0.7 – 10 l/h

### CR Fixed speed peristaltic pump

---

- Designed for single-tank or tunnel warewash machines
- Unit's digital programming mode allows users to set the conductivity that best corresponds to the desired detergent concentration
- Pump can also detect a lack of water, reducing risks of a costly malfunction
- Flow rate 7 – 10 l/h

### SR Peristaltic pump

---

- Designed to dose rinse aid on all single-tank or tunnel warewash machines
- Features volumetric or timed dosing modes
- Flow rate 0.1 – 1 l/h





## Kronos Series

The Kronos Range has been designed as the most reliable and robust of pumps within the SEKO range for Cleaning and Hygiene applications. In the place of complex functionality, stylish shapes or cost savings, the range has been designed to be an “**plug and play**” version of SEKO products, with an **extended life expectancy**, **low maintenance expectations**, and even **lower installation costs**.

### Kronos 10

- For use in light to medium intensity environments
- Featuring a brand new technical enclosure and operating functions
- Easy to use and offering affordability for many applications.
- Both analogue and digital versions
- Flow rate 0.16 – 10 l/h

### Kronos 20

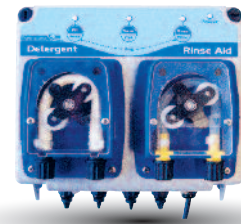
- Digital only professional pump suitable for use in harsher environments
- 3 models available - detergent, rinse aid and with conductivity control input
- LCD backlit display
- Motor surge protection
- Built in tube break alarm
- Features the optional ModBus communication port
- Flow rate 0.16 – 10 l/h

### Kronos 50

- Delivers the highest precision and consistency of dosing even at smallest concentrations
- 10 models to choose from
- Uses a Stepper motor, to offer infinitely variable dosing and superior reliability
- SEKO's Transaxle Technology greatly extends the life of the motor as well as the squeeze tubes
- Quietest pump operating at <35dB
- Flow rate 0.002 – 25 l/h

## Double & Triple systems

- Complete solution for warewash machines in a single enclosure
- Quick and easy installation to saves time and costs
- Smart electronic and multiple programming features
- Low maintenance and robust design



## TwinDose Series

The TwinDose series offers compact systems for automatic dosing of detergent and rinse aid. Specifically designed for **fixed-cycle, hood and conveyor professional warewash machines**, it includes SEKO's ever present design features that **ensure easy installation and programming**, and "**quick connection**" solutions between pump and warewash machine.

**Transaxle Technology** helps improve operating efficiencies, providing support and stability to the drive shaft, making the roller pressure on the squeeze tubes more uniform, resulting in significantly **improved lifetime** for both the motor and squeeze tubes.

### TwinDose 20

- Designed for hood and conveyor-type warewash machines
- Suitable for professional single and double solenoid valve warewash machines
- Compact design and LED display, using potentiometers and DIP switches
- Flow rate 0.2 – 6 l/h

### TwinDose 10

- Compact system for automatic detergent & rinse aid dosing
- Suitable for professional single solenoid valve warewash machines
- Features LED display, potentiometers & DIP switch settings
- Flow rate 0.2 – 4 l/h

### TwinDose 25

- Designed for hood machines, though can also be used for conveyor type machines
- Analogue system that uses advanced technology, offering timed dosage at constant speeds
- Independent electronic circuit boards manage the dosing of products delivered to the wash tank.
- System can be set with DIP switches & buttons
- Flow rate 1 – 6 l/h



## TwinDose 35

- Designed for heavy duty applications, where dosing time exceeds 50 hours per week
- Microprocessor controlled dosing system with LED display, uses potentiometers and DIP switches settings
- Solution concentration detected & kept constant via conductivity sensor or by a timer
- Also available in a powder compatible version
- Flow rate 0.9 – 10.8 l/h

## TwinDose 40/40 Plus

- Designed for heavy use, industrial warewash machines
- Full digital control, with password protection for programming
- Back-lit display
- Conductivity probe for accurate reading.
- Plus models get an inductive probe
- Flow rate 2.4 – 13.2 l/h

## TwinDose 40 EVO/EVO Plus

- Evolution of the TwinDose 40/40 Plus
- Feature separate management capability of the initial charge, with 2 differently set programs, and offer the possibility to dose the desired amount of chemical in calibrated mode.
- Also offer a wide set of statistical data
- Plus models get an inductive probe
- Flow rate 1.5 – 9 l/h

## TwinDose 50 EVO/EVO Plus

- Microprocessor controlled dosing system with further upgrades with regards to TwinDose 40 EVO
- It can house up to 3 pumps, one of which may even be electromagnetic
- Manages up to 3 different dosing programs that can be started automatically at certain times of the day
- Plus models get an inductive probe.
- Flow rate 1.5 – 9 l/h



## Timed Dosing

- Delivery of a single chemical at predetermined timed intervals
- Up to 48 programmable events per day (Drain Plus)
- Quick and easy installation
- Low maintenance and robust design
- User friendly programming speeds up operations



## Drain Dosing

SEKO's **timed dosage** systems are designed for use with biological drain dosing systems and provides **accurate automatic dosing** of enzyme based chemicals that will naturally prevent the build-up of fat, providing they are applied regularly at the appropriate time of day. It can be installed directly into **waste outlet pipe, grease traps, pumping stations or urinals.**

## TM Digital

---

- Provides very easy and accurate timed dosing solutions using a programmable clock to control the pump
- TM digital makes it possible to setup to 17 dosing periods throughout the week
- The programmer can start the pump (in manual mode) or disconnect the pump from the clock signals
- Flow rate 0.4 – 3 l/h
- Also available with power supply by batteries

## Drain Plus

---

- Drain Plus uses state of the art electronics to insure reliability and ease of use
- Microprocessor means the unit can set up to 48 daily dosing operations
- Digital display, counts down dosing time providing visual verification
- Drain Plus features easy installation, setting and programming, with 2 separate menus
- Dosing time can be digitally set or measured by calibration
- Flow rate 120 ml/h – 12 l/h







# Laundry

## SEKO Solutions for a Smarter Laundry

Running and supplying on-premise or commercial laundries a complex business and accurate, reliable dosing management is one aspect that needs to be dependable. SEKO has a range of liquid and powder, single and multi-machine units to suit most applications including the provision for remote access and data management of a site operation. SEKO's laundry dosing systems, regardless of the range chosen, offer the most reliable, easy-to-use and resilient models on the market today.

### **OPL machines**

- Peristaltic dosing pumps
- Double/Triple Dosing systems

### **Commercial machines**

- Double/Triple Dosing systems
- Multiple dosing systems

### **Industrial machines**

- Double dosing systems
- Multiple dosing systems

### **Tunnel machines**

- Dosing systems

### **Multi-washer machines**

- Centralised peristaltic multiwasher system
- Decentralised pneumatic multi-washer system
- Multi-tunnel system with PLC
- Relay systems for tunnel





# Dynamik LR, OPL Basic, Smart Systems

- Wide spread of flow rates for all types of laundry machines
- Quick and easy installation saves time and reduces costs
- Low maintenance and robust design maximizes the investment
- Wide range of tubes to adapt to all chemicals
- Multiple sizes and functions for maximum flexibility



## Dynamik LR

---

- Designed for small OPL washing machines with maximum capacity of 20 kg
- Digital multifunction peristaltic dosing pump that is simple to install, robust and easy of use
- Wide range of options which can connect to a probe level, have an audible alarm and be primed via a switch
- Feature Transaxle technology that extends squeeze tube and motor life
- Flow rate 15 l/h



## OPL Basic

---

- For liquid and dry applications up to 25kg
- Easy to install, calibrate and with a low maintenance requirement
- Dosing activated by washer signal or by manual switch
- Easy access 90 degree cover
- Optional remote switch
- Run time of 0 - 10 minutes
- Flow rate 18 l/h



## OPL Basic Evo

---

- OPL Basic EVO designed where a cost-effective system, with a 2/3 product solution is required.
- Simple to install and use and featuring our Transaxle Technology
- Reduced dimensions make the OPL Basic EVO perfect for installation in narrow spaces
- 2 or 3 pumps are independently programmable, and OPL Basic EVO features the option of being set in "Sequence" mode to ignore the triggers of the previous washing phases
- Programming mode uses the multilingual, alphanumeric display with specifically designed software and preloaded data
- Optionally available with a flushing manifold

## Dynamik LR, OPL Basic, Smart Systems



### Smart Systems Series

SEKO's Smart range of combines technological development in peristaltic systems, with guaranteed reliability for the chemicals dosed in commercial laundry machines, both **OPL and Industrial**.

The range covers machines from **25kg up to 100kg**. Available in versions from **2 to 7 pumps**, offering a wide flow rate range, with long-life pump motors with fixed or selectable flow rates, and able to **dose up to 3 chemical products simultaneously**, Smart Systems Series offers the most complete and affordable advanced linear programming system, assuring total dosing management.

#### Smart H

---

- Designed for industrial sized washers over 25kg up to 300kg
- Manages up to 7 pumps and handling up to 20 wash formulas, each one with unique run times and delay times for each pump
- Flow rate 30 – 120 l/h

#### Smart RH

---

- Based on the Series H but with relay mode operation

#### Smart P

---

- Designed for commercial sized washers up to 25kg
- Manages up to 7 pumps. Ease of installation and connection are inbuilt
- Series P has a front cover that opens to 85° allowing easier electrical connections
- Flow rate 18 l/h

#### Smart PH

---

- Based on the Series P but with relay mode operation



## Smart Spring

---

- Designed to control a motor drive or solenoid metering pumps, instead of peristaltic pumps
- System can operate in a programmable mode (triggered by signals) or in relay mode
- Smart Spring can handle up to 20 wash formulas and can dose 3 chemicals simultaneously
- Ideally suited to tunnel machines with their high turnover
- Power relay for heavy duty loads

## Smart Spring R

---

- Smart Spring R runs with a relay mode

## Smart Programmer

---

The brain within every professional laundry installation, the programmer is the critical element of the whole system. SEKO has developed a programmer capable of **managing the entire SMART range of laundry pumps in a single model**, which makes end user training simple and easy, reducing the risk of operational errors.

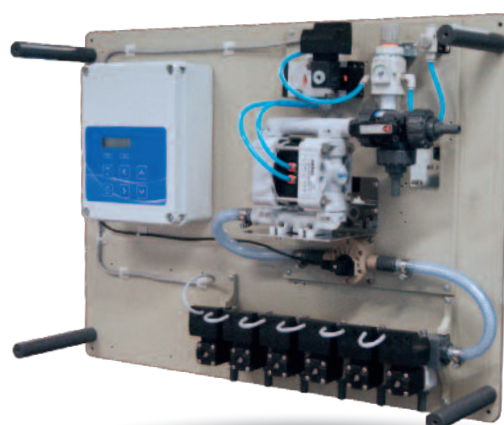
SEKO's Smart Programmer reflects a complete and advanced linear programming system, to assure total dosing management for the Smart models.

- Manages up to 40 wash formulas, in 2 separate categories with 20 formulas each
- Has 25 programming lines for each washing formula
- Doesn't require a connection to the control unit to be able to program the operations
- Chemical usage data available via serial interface
- "SMART WARE" software assures programming and statistic data management by PC
- Autowash function just needs signal combinations from washers to work
- Programming available in: English, Italian, French, German and Spanish
- Program security of password protection



## Wash Series

- Turn key multi-washer chemical dosing system, flexible and reliable
- Configurable for up to 10 washer extractors, 16 chemicals and 50 formulations
- Offers superior dosing accuracy & remote management
- Available with multiple or single pump technologies for tailor-made solutions for any application
- Reliable communications between modules via CANbus



## Wash Series

SEKO's Wash Series is designed to allow accurate control of the total laundry operation, helping to **manage consumption of chemical, water and energy** within the overall wash process. Over and above the Smart series, SEKO's Wash Series offers a **class leading remote control** of the dosing equipment from anywhere in the world, allowing the ultimate in customer support.

Wash Series works independently of an operating system/hardware. It works in **any web browser** on any internet enabled device, without any special Software or App. This remote communication ability allows **service companies** and personnel to manage and **reduce maintenance costs** and offers service companies diagnostics abilities improving customer service.

## WashMaster

- Designed for very accurate dosages on Wash extractor up to 100Kg size
- Peristaltic multi pump dosing unit, featuring high capacity "H" pump heads allowing 100 l/h flow rate
- Features self adjusting calibration

## WashUltra

- Fast sequential dosing obtained with a single pneumatic diaphragm pump and several valves for inlets a distribution in a single flushing line
- Comes as standard with the Proof Of Dosing (POD) flowmeter
- Inbuilt self adjusting calibration



**WARNING**  
DO NOT OPEN DOOR WHEN  
MACHINE IS TURNING  
OR WATER IN THE WINDROW  
OR LIGHT IS ON.

INTERRUPTION  
BEFORE  
DOOR.

WASH







# Surface Cleaning

## SEKO's Solutions for Surface Cleaning and Disinfection

SEKO offers the widest range of chemical dilution and dispensing stations, surface cleaning, foaming systems and automated dosing management solutions, suitable across a multitude of applications. Our low pressure systems are especially effective, providing long contact time ensuring an effective deeper clean. Our ranges offer the trademark SEKO attention to detail for precision, safety, reliability, ease of use and affordability.

### Dilution

- Hand pump
- Dilution system

### Cleaning and disinfection

- Spraying system

### Foaming

- Foaming system

### Spraying

- Automotive spraying system

### Refill

- Chemical dispensing system

# Dilution Control

- Precision dosing systems
- Outstanding solutions
- Ease of installation
- Ease of use
- Reliable and secure



## ProMax and ProMax C

- ProMax and its ProMax C variant, offer the most intuitive and cost effective dispensing system available in the market today
- Available in either 1 or 4 product versions
- Revolutionary patented hydrodynamic technology sets new industry standards of performance and reliability
- Modular and flexible for maximum versatility for Kitchens to Laundry, Janitorial services to Commercial Cleaning
- Efficiently fills small, medium and large containers with accurately diluted use solutions from chemical concentrates
- Outstanding space for personalized branding or customized communication without costly printing minimums and set up charges
- ProMax C certified by all the leading European water authorities
- Flow rate 4 – 30 l/min



## ProDose-R

- Offers easy and affordable control and dilution accuracy for manual warewash detergents and sink sanitizers
- ProDose-R features enhancements including a flexible spout, larger diameter fittings for highly viscous liquids and an improved stroke regulation
- Colour coded cap can be easily removed to allow access to the dosage setting mechanism
- ProDose-R offers up to 6 different dosage settings

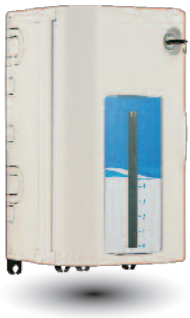


## ProSink-R

- Provides high precision dosing for manual warewash in catering environments
- Automatically and consistently mixes the precise amount of detergent and sanitizer with water with the simple twist of a knob
- Tool free maintenance
- 15 different mixing ratios
- Available in either 1 or 2 product versions
- Flow rate 4 – 16 l/min



## Dilution Control



### SekureMax

---

- Modular evolutionary chemical dispensing cabinet
- Semi flat pack design assists transport and storage costs
- Offers secure and precise dilution of cleaning or disinfectant chemicals
- Provides best compromise between accessibility and ease of cleaning
- Large front offers space for customized communication to promote either a brand or health and safety or usage instructions
- Ultimate flexibility, able to hold multiple sizes of chemical container covering 5 litre, 2 x 2 litre, 3 x 1 litre
- Lockable cabinet door provides appropriate level of security



### SekureDose

---

- "ALL IN ONE" system for dosing chemicals in places like hotels, restaurants, schools and offices
- Offers ideal solution for filling spray bottles or buckets to wash floors, counter tops or other hard washable surfaces and for sink filling for pot and pan washing with accurately dosed cleaning solution
- Secure in use, simple tool free installation and flexible, modular design, fast stroke regulation
- No electrical connection or water supply required
- Offers outstanding space for personalized branding or communication customizations without costly printing minimums and set up charges, with user friendly, image enhancing feature
- Colour coded caps for ease of product identification and training

# Cleaning and Disinfection

- Ideal for large food preparation areas
- Suitable for retail, institutional and healthcare markets
- Ergonomic design
- HACCP compliant
- Accurate dilution control
- Integrated hose support
- Easy installation
- Intelligent Venturi system



## ProTwin

- Automatically mixes and dispenses concentrated chemicals
- Spray gun with adjustable spray pattern delivers high levels of wet foam
- Easy switching between Rinse & Sanitize using central dial selector
- Available as a complete unit or as component parts
- Optional Dry Foam kit available includes a foam system, hose and foam lance
- Works at up to 50° C



## ProWash

- "INTELLIGENT" venturi system means simple maintenance
- Helps reduce water & chemical waste
- Features high performance suction
- Working temperature of up to 50° C
- 2 product offers - single or dual product options
- Working pressures 1.5 – 6 bar



## ProKlyn

- Minimizes water & chemical waste
- Brass venturi external body provides greater resistance and robustness, while its inner venturi is made of PP for high chemical compatibility
- Venturi is also extractable and interchangeable, making for easy, quick maintenance
- Working temperature of up to 50° C
- 2 product offers - single or dual product options
- Working pressures 1.5 – 6 bar

## Cleaning and Disinfection



### JetNeat

---

- Portable low pressure cleaning system, requires no power or air supply, at up to 45°C
- Combines a quick connect spray gun with chemical or disinfectant reservoirs made of durable, chemical resistant plastics
- Large range of metering tips for controlling dilution ratios
- 1.4 and 2.5 litre versions available



### ProFaucet

---

- Easy to operate dosing solution for catering sinks
- Requires no additional plumbing
- Features durable chemical compatible materials
- Flow rate of 20 l/min

# Foaming Systems

- Designed to offer outstanding performance in the cleaning and disinfection of vertical or difficult access surfaces
- Easy Maintenance
- Venturi system with no moving pieces
- Requires no additional power supply
- Food grade materials
- Incorporated hose rack
- 15 colour coded dilution tips



## ProFoam

- Chemical foam generator that offers automatic mixing of chemical with water generating a thick creamy foam
- Foam density reduces water & chemical waste
- Designed to meet HACCP requirements
- Works at 50° C working and water pressures of 2 – 6 bar



## ProFoam-R

- ProFoam-R in addition to ProFoam, features a rinse functionality
- Produces high quality dry foam
- Foam density reduces water & chemical waste
- Designed to meet HACCP requirements
- Works at 50° C working and water pressures of 2 – 6 bar



## ProMulticlean

- Foam, rinse and spray for 2 chemicals
- Backflow device optionally available
- Foam density reduces water & chemical waste
- Designed to meet HACCP requirements
- Works at 50° C working and water pressures of 2 – 6 bar



## Foam Cannon

- Pressurized mobile system producing rich and thick foam
- Chemical premixed with water creating cleaning or disinfection solution
- System needs constant connection to compressed air to operate
- Equipped with a lance and dosing tube
- Comes in 24 or 50 litre models
- Available in stainless steel and painted versions



## Spray Systems

- Designed for the professional automotive care sector,
- Can also be used in other industrial cleaning processes
- Easy to use
- Ergonomic design
- System can be assembled with cart
- Venturi system with no moving parts
- Integrated hose rack



### ProPulv

---

- Single product system for spraying pre-wash shampoos or detergents on cars, trucks and other such vehicles
- Designed to HACCP basic requirements for possible food applications
- Stainless steel lance
- Working temperature up to 50°C
- Working pressure 2 – 6 bar



### ProNet

---

- Single product system for spraying rinse aid solutions on cars, trucks and other vehicles
- Reduces water & chemical waste
- PVC lance
- Working temperature up to 50°C
- Working pressure 2 – 6 bar



### ProDual

---

- Dual product system for spraying pre-wash shampoos, detergents and rinse-aid solution on cars, trucks, and other vehicles
- Reduces water and chemical waste
- Stainless steel and PVC lances
- Working temperature up to 50°C
- Working pressure 2 – 6 bar



## ProAcid

---

- Specifically designed to spray aggressive detergents or acid chemicals in sectors including: transport, industry, institutional & agriculture
- Engineered for better resistance to highly concentrated aggressive chemicals
- PVDF Venturi
- PVC lance
- Working temperature up to 50°C
- Working pressure 2- 6 bar



## Spray Cannon

---

- Pressurized mobile spraying system
- Chemical premixed with water creating cleaning or disinfection solution
- System needs constant connection to compressed air to operate
- Equipped with a lance and dosing tube
- Comes in 24 or 50 litre models
- Available in stainless steel and painted versions

## Refill Range

- Designed with the busy cleaning operator in mind
- Focused on simplicity
- Reduction of operational costs
- Ready to install solutions
- Quick connection system



### ProFill

---

- Automatic & consistent mixing of chemical cleaning solution
- For floor scrubber machines or tanks up to 120 litres
- Comes with 14 sizes of calibration tips
- Uses a specially conceived blue venturi design, that means there is no need to disassemble the whole machine
- Flow rate 14 l/min
- Working temperature up to 50°C
- Working pressure 2 - 6 bar



### ProFill Premium

---

- As per ProFill
- 14 litres per minute flow-rate
- Low maintenance design and ergonomic delivery gun designed for tanks up to 120 litres
- Also offers a rinse function
- Working temperature up to 50°C
- Working pressure 2 – 6 bar



### ProFill Tower

---

- High flow rate single chemical dispensing system
- Refill the scrubber drier machines or tanks and has a 300 litre capacity
- Offering 15 different dilution rates
- Connected directly to the water supply
- Automatically refilled with water
- Flow rate 200 l/min
- Reduced maintenance thanks to blue venturi system
- Automatic switch off by float or magnetic valve
- EPDM check valve with Hastelloy spring





# Your Choice, Our Commitment

People choose to do business with SEKO for one or more reasons, but ultimately it is their choice, and therefore they merit our commitment. "Our commitment" is total and not only to our customers, but also to each other and the Company's to its employees.

## Vision

**TO BE YOUR PARTNER OF CHOICE FOR  
DOSING SOLUTIONS, GLOBALLY**

SEKO, is a passionate, dedicated Global Family of Professionals. We listen to each of our Partners and are committed to deliver the right solution in the Hygiene, Water Treatment and Industrial Process markets.

## Values

**MUTUAL RESPECT, QUALITY AND  
SPIRIT OF COLLABORATION**

### MUTUAL RESPECT

Mutual Respect because doing business is about being able to generate trust between Customer and Supplier. We'll deliver against our commitments, on time and in a transparent fashion, so you know can plan for your own business needs.

### QUALITY

Quality for SEKO is a 360° reality. It covers not only the design, development, production and delivery of our products and solutions but it runs through the core professionalism of our teams.

### SPIRIT OF COLLABORATION

Spirit of Collaboration is fundamental to our success and SEKO prides itself on how we work as a worldwide team, blending multiple country teams and functions to bring solutions to a Customer request or market need from an idea to the real world in very short time, across our global presence and beyond.





# Your Choice, Our Commitment

In the modern Globalised world, being a privately owned Company has significant benefits especially for our Customers, our Partners. For over 40 years, SEKO has developed a Global organisation able to take the longer view, manage the pressure of the now, and to plan for the long term, delivering true Partnership for our Customers, with transparency and mutual respect for each other.

Whether it's for our reknown flexibility, our attention to detail, the high-quality products, or just the way we do business, we understand that it's Your Choice to do business with us. It is Our Commitment to fulfill your needs wherever you, our Customers are.



For more information about our portfolio, worldwide locations, approvals, certifications, and local representatives, please visit [www.seko.com](http://www.seko.com)

As part of a process of on-going product development, SEKO reserves the right to amend and change specifications without prior notice. Published data may be subject to change.

© SEKO, Layout and origin: Italy, 850003-CHD\_en, 04.2017

The SEKO logo, consisting of the word "seko" in a bold, blue, sans-serif font. The letter 's' is lowercase, while 'e', 'k', and 'o' are uppercase. The logo is positioned at the bottom right of the page, with a large blue abstract image of water droplets and light rays in the background.